

Notices to Mariners, SWEDEN Swedish Maritime Administration



Areas in Swedish Notices to Mariners



NtM-Editorial office
Swedish Maritime Administration
601 78 Norrköping

Sweden
Tel: 0771 630 605
E-mail: ufs@sjofartsverket.se

Publisher:
Hydrographer Patrik Wiberg

ANNOUNCEMENTS

*** 17555**

Chart: 532, 612, 6143, 6144, 6172, 623, 6231, 922

Sweden. not area bound. New print of charts. New edition of chart 532, 612, 6143, 6144, 6172, 623, 6231 and 922.

A new edition of the following nautical charts are available from April 2023:

Chart Edition

532	10.0 NEW EDITION*	*also see NtM 17622
612	12.0 NEW EDITION	
6143	14.0 NEW EDITION	
6144	12.0 NEW EDITION	
6172	11.0 NEW EDITION	
623	11.0 NEW EDITION	
6231	11.0 NEW EDITION	
922	12.0 NEW EDITION	

A NEW EDITION is a print of an existing chart, containing changes significant to navigation which are not possible to fully describe in the Swedish NtM.

<https://ufs.sjofartsverket.se/en/Current/Products>

Sjöfartsverket. Publ. 03 May 2023

*** 17622**

Chart: 532

Sweden. Sea of Bothnia. Correction of edition number chart 532.

See: 2023:961/17555

Early copies of the new edition of chart 532 have got the wrong edition number (9.0 NEW EDITION).

The correct edition number is 10.0 NEW EDITION.

Amend	edition number 9.0 to 10.0	Chart 532
--------------	----------------------------	-----------

Sjöfartsverket. Publ. 03 May 2023

NOTICES

Areas without notices in this booklet

The Quark
Sea of Bothnia
Sea of Åland and Archipelago Sea
Gulf of Finland
Gulf of Riga
Central Baltic
South-Eastern Baltic
South-Western Baltic
The Belts
Kattegat
Skagerrak
Inshore waters
not area bound

Bay of Bothnia

*** 17583**

Chart: 421, 4211

Sweden. Bay of Bothnia. Skelleftehamn. Näsudden. Light extinguished.

Delete	light Oc WRG 8s with adjoining sectors	64-40,873N	021-16,223E
---------------	--	------------	-------------

Adm. LoL C5816

Bsp Bottenviken 2018/s43, s64, s65, Bsp Bottenviken 2023/s43, s64, s65

Transportstyrelsen. Publ. 03 May 2023

Northern Baltic

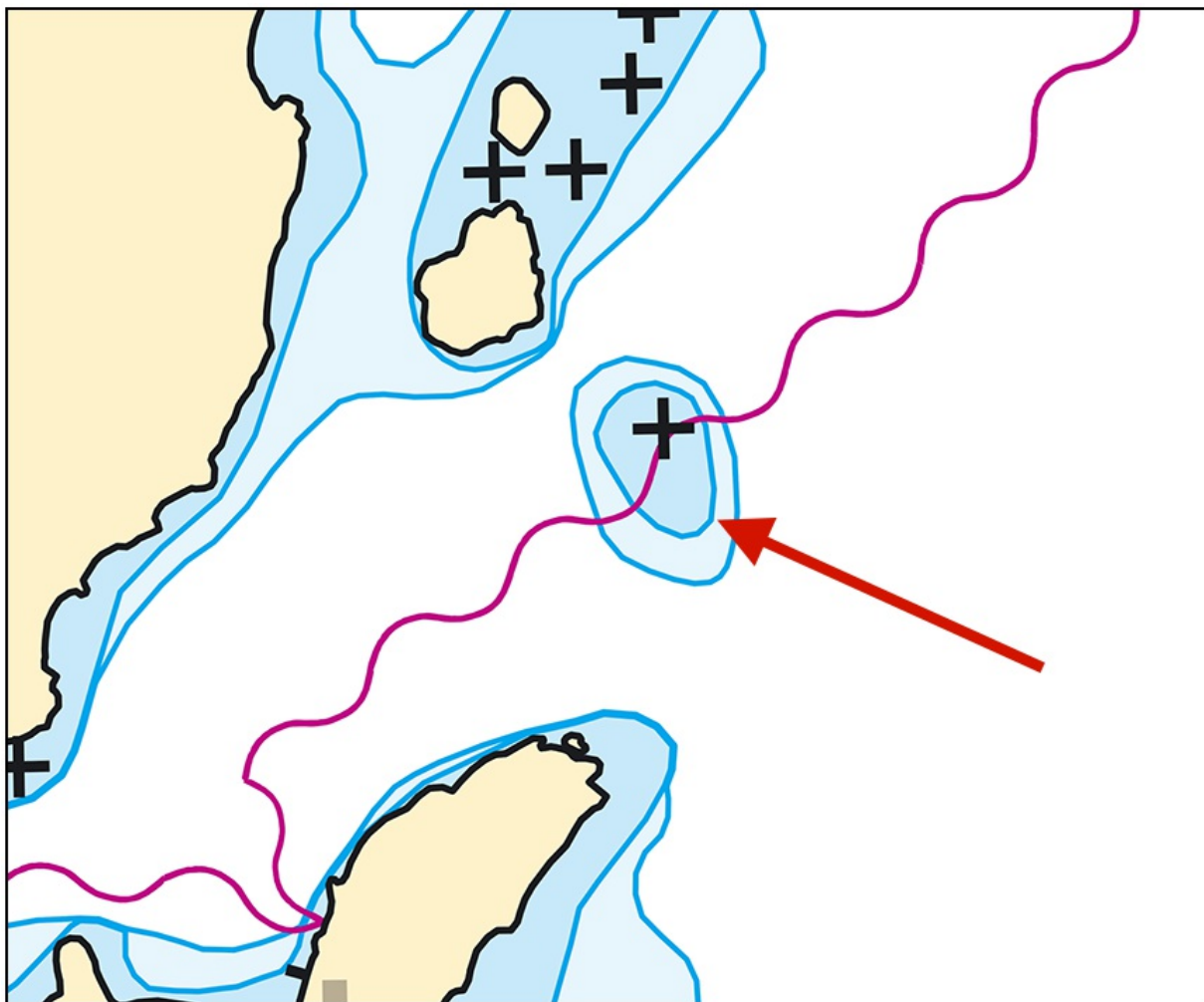
* 17545

Chart: 616, 6163

Sweden. Northern Baltic. SE of Stockholm. E of Ornö. E of Kvarnön. Depth contour.

Amend	3 m depth contour according to chartlet in position	59-05,71N	018-33,48E
-------	---	-----------	------------

BSP Stockholm M 2022/s44, s50, BSP Stockholm S 2022/s06



E of Kvarnön. Depth contour

Sjöfartsverket. Publ. 03 May 2023

* 17625

Chart: 6181

Sweden. Northern Baltic. S of Södertälje. Kaggfjärden. Kagghamra. Depths.

A hydrographic survey in Kaggfjärden has shown other depths than charted. Important amendments are presented in the table below, and will be published in the next print of the affected chart. The changes are available as an ENC update.

	Kagghamra		59-05,77N	017-47,03E
Delete	bar-swept area 5 m	1	59-05,77N	017-47,03E
Insert	wreck 3,7 m	2	59-05,803N	017-47,104E
Insert	obstruction 5,2 m	3	59-05,767N	017-47,111E
Insert	depth 1,4 m	4	59-05,740N	017-47,000E
Insert	minor posts inside new 3 and 6 metre depth contours	5	59-05,767N	017-46,964E
Delete	depth 6 m	6	59-05,744N	017-46,874E
Insert	depth 8,6 m	7	59-05,714N	017-46,863E

Bsp Mälaren - Hjälmaren 2020/s32, s33



Kagghamra

Sjöfartsverket. Publ. 03 May 2023

Lake Mälaren and Södertälje Canal

* 17557

Chart: 113

Sweden. Lake Mälaren and Södertälje Canal. Västerås. Leading lines. Beacons. Buoyage.

Amend	south cardinal spar buoy to special purpose spar buoy	1	59-35,750N	016-32,163E	
Amend	south cardinal spar buoy to special purpose spar buoy	2	59-35,823N	016-32,651E	
Insert	south cardinal spar buoy	3	59-35,657N	016-33,061E	
Amend	port-hand spar buoy to port-hand light buoy FI R 3s and move to	4	59-35,532N	016-31,810E	
Delete	port-hand light buoy FI R 3s	5	59-35,542N	016-31,681E	
Delete	port-hand light buoy Q R	6	59-35,510N	016-31,555E	
Insert	port-hand light buoy FI R 3s	7	59-35,504N	016-31,591E	
Delete	port-hand spar buoy	8	59-35,449N	016-31,442E	
Insert	port-hand light spar buoy FI R 3s	9	59-35,413N	016-31,428E	
Delete	port-hand spar buoy	10	59-35,374N	016-31,319E	
Delete	port-hand spar buoy	11	59-35,270N	016-31,303E	
Insert	port-hand light spar buoy FI R 3s	12	59-35,294N	016-31,440E	
Insert	port-hand spar buoy	13	59-35,238N	016-31,366E	
Move	leading light F R upper to	14	59-35,142N	016-30,945E	and amend light character to Iso R 2s
Move	leading light F R lower to	15	59-35,163N	016-30,983E	and amend character to Q R and then move leading line as shown
Move	beacon to	16	59-35,210N	016-31,245E	
Amend	character of leading light from F G to Q G	17	59-35,600N	016-31,530E	
Amend	character of leading light from Q WRG to Iso WRG 2s	18	59-35,598N	016-31,488E	
Amend	character of leading light from 2 F R to Iso R 2s and Q R	19	59-35,561N	016-31,440E	
		20	59-35,556N	016-31,512E	
Amend	character from Q G to FI G 3s	21	59-36,053N	016-33,177E	

Bsp Mälaren - Hjälaren 2020/s20, s21, s58

Southern Baltic

*** 17417 (T)**

Chart: 74, 741, 7413, 83

Sweden. Southern Baltic. S of Ronneby. S of Gåsafeten. Firing Exercises May 22 - June 9.

Firing exercises with live ammunition towards position below will be carried out within firing range D164 during stated times. Danger area 4 M from target.

Further information during ongoing exercise can be obtain on VHF Ch 16.

Target anchored in position	56-04N	015-14E
-----------------------------	--------	---------

May 22	0900 - 2100 LT	4 M
May 23	0900 - 2400 LT	4 M
May 24	0000 - 2400 LT	4 M
May 25	0000 - 2100 LT	4 M
May 29	0900 - 2100 LT	4 M
May 30	0900 - 2400 LT	4 M
May 31	0000 - 2400 LT	4 M
June 1	0000 - 2100 LT	4 M
June 7	0900 - 2100 LT	4 M
June 8	0900 - 2100 LT	4 M

Bsp Hanöbukten 2022/s06, s18, s19, s44, s45

Försvarsmakten. Publ. 03 May 2023

*** 17568**

Chart: 7, 71, 714, 74, 741, 7411, 83

Sweden. Southern Baltic. SE of Karlskrona. Utlängan. Light 'Utlängan'. Sectors.

Change of sectors on light 'Utlängan' as per below.

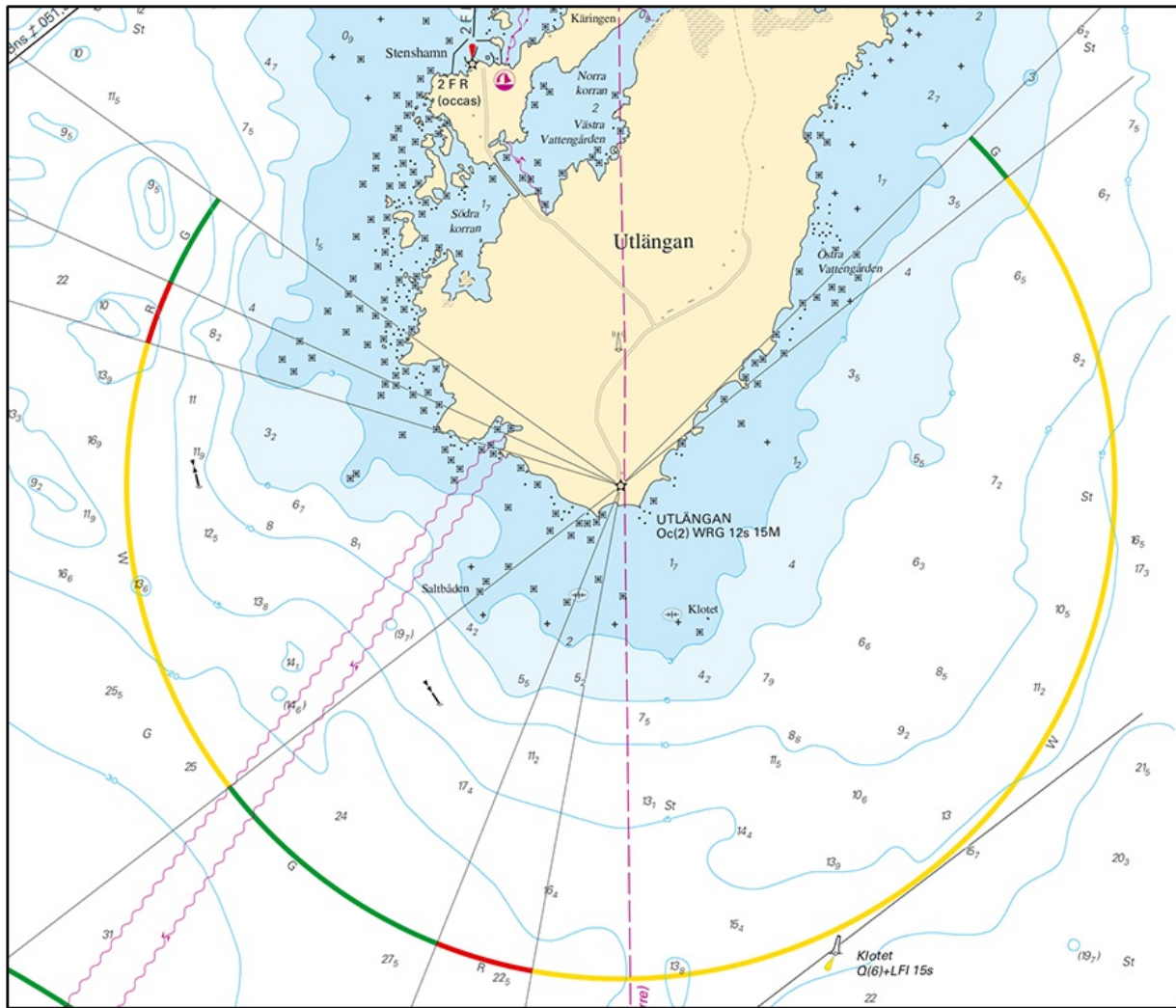
Light 'Utlängan'	56-00,8N	015-47,3E
------------------	----------	-----------

Bearings from the sea towards the light Color

011,0° - 022,5°	R
022,5° - 053,0°	G
053,0° - 107,5°	W
107,5° - 115,0°	R
115,0° - 126,2°	G
126,2° - 225,7°	Dk
225,7° - 232,0°	G
232,0° - 011,0°	W

Adm LoL C.7440

Bsp Hanöbukten 2022/s15, s35



Light 'Utlängan', amended sectors

*** 17584****Chart: 742****Sweden. Southern Baltic. Fairway to Port of Sölvesborg. Buoyage.**

					Name
Move	port-hand spar buoy 135 m to	1	55-59,297N	014-33,226E	
Amend	character of port-hand light spar buoy to FIR 2s	2	56-00,060N	014-33,510E	Sbg 2
Amend	character of starboard-hand light spar buoy to FIG 2s	3	56-00,623N	014-34,066E	Sbg 3
Amend	character of port-hand light spar buoy to FIR 2s	4	56-01,069N	014-34,382E	Sbg 4
Amend	character of starboard-hand light spar buoy to FIG 2s	5	56-01,057N	014-34,437E	Sbg 5
Amend	character of port-hand light spar buoy to FIR 2s	6	56-01,469N	014-34,728E	Sbg 6
Amend	character of starboard-hand light spar buoy to FIG 2s	7	56-01,452N	014-34,785E	Sbg 7
Amend	character of starboard-hand light spar buoy to FIG 2s	8	56-01,580N	014-34,900E	Sbg 9
Amend	character of port-hand light spar buoy to FIR 2s	9	56-01,798N	014-34,815E	Sbg 10
Amend	character of starboard-hand light spar buoy to FIG 2s	10	56-01,857N	014-34,870E	Sbg 11
Amend	character of port-hand light spar buoy to FIR 2s	11	56-02,009N	014-34,893E	Sbg 12
Amend	character of starboard-hand light spar buoy to FIG 2s	12	56-01,983N	014-34,945E	Sbg 13

Bsp Hanöbukten 2022/s22, s25, s52

Sölvesborg Hamn & Stuveri AB. Publ. 03 May 2023

The Sound

*** 17566****Chart: 922****Sweden. The Sound. SW of Höganäs. Special purpose spar buoy withdrawn.**

Delete	special purpose spar buoy	56-11,26N	012-32,23E
---------------	---------------------------	-----------	------------

Bsp Sydkusten 2020/s10, s11

Transportstyrelsen. Publ. 03 May 2023

Lake Vänern and Trollhätte Canal

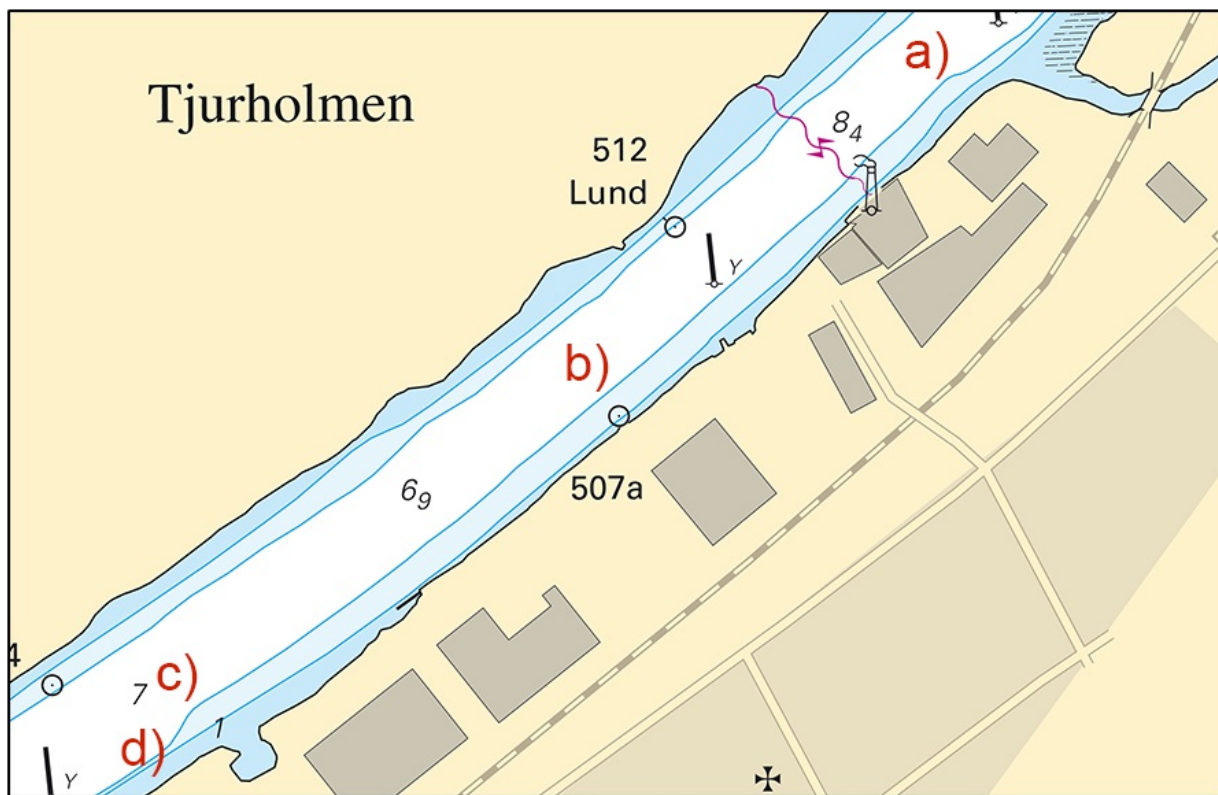
* 17547

Chart: 1352

Sweden. Lake Vänern and Trollhätte Canal. Göta älv. Älvängen. Tjurholmen. Amended depth contour.

Amend	6 meter depth contour between positions a) - d) according to chartlet	a)	57-57,810N	012-07,360E
		b)	57-57,660N	012-07,050E
		c)	57-57,520N	012-06,700E
		d)	57-57,500N	012-06,670E

Trollhätte kanal - Dalslands kanal 2020/s12



Amended depth contour at Tjurholmen in river 'Göta älv'

Sjöfartsverket. Publ. 03 May 2023